

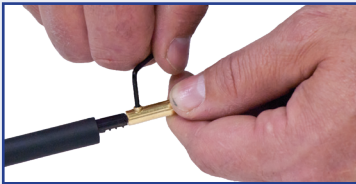
ACE CONNECTOR™

Low Voltage Landscape Lighting Fittings

Installation Instructions:

IMPORTANT: Turn off power before installing or removing connector. Product to be used in accordance with local and national codes.

1. Prior to stripping wire, slide heat shrink onto cable.
2. (Small) Strip wires 1/2" (12.7mm)
2. (Medium) Strip wires 5/8" (15.9mm).
2. (Large) Strip wires 5/8" (15.9mm).
3. Align any frayed strands or conductors.
4. Place stripped wire(s) into end(s) of lug.
5. Tighten set screw with Allen wrench. Do not over torque.
6. Position heat shrink on lug. Heat evenly with heat gun or hand held torch until sealed. Do not reuse.



Small ACE Connector installation

ACE Connector™ Low Voltage Landscape Lighting Fittings (Small)

Catalog #	Selling Unit
90320	Box of 50
90325	Box of 25 2 pc bags



PRODUCT SPECIFICATIONS AND MEASUREMENTS

Max. Voltage: 30V DC/15V AC
Max. Amperage: 25A
Connector Size: 0.25" x 1.0"



Wire Type: Copper
Wire Range: Min #18/Max #12 Solid and Stranded
UL Designation: BLC5

MEASUREMENTS

A - 0.25" B - 1.0"
A - 6.35mm B - 25.4mm



CONSTRUCTION

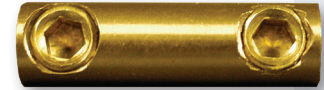
Lug: Brass
Set Screw: Brass
Heat Shrink: Polyolefin with adhesive liner

CURRENT RATING

Conductor Size (AWG)	18	16	14	12
Maximum Current (AMP)	10	13	18	25

ACE Connector Low Voltage Landscape Lighting Fittings (Medium)

Catalog #	Selling Unit
90330	Box of 50
90335	Box of 25 2 pc bags



PRODUCT SPECIFICATIONS AND MEASUREMENTS

Max. Voltage: 30V DC/15V AC
Max. Amperage: 25A
Connector Size: 0.38" x 1.25"



Wire Type: Copper
Wire Range: Min #18/Max #8 Solid and Stranded
UL Designation: BLC

MEASUREMENTS

A - 0.38" B - 1.25"
A - 9.53mm B - 31.75mm



CONSTRUCTION

Lug: Brass
Set Screw: Brass
Heat Shrink: Polyolefin with adhesive liner

CURRENT RATING

Conductor Size (AWG)	18	16	14	12	10	8
Maximum Current (AMP)	10	13	18	25	25	25

ACE Connector Low Voltage Landscape Lighting Fittings (Large)

Catalog #	Selling Unit
90340	Box of 50
90345	Box of 25 2 pc bags



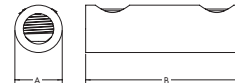
PRODUCT SPECIFICATIONS AND MEASUREMENTS

Max. Voltage: 30V DC/15V AC
Max. Amperage: 25A
Connector Size: 0.48" x 1.25"

Wire Type: Copper
Wire Range: Min #18/Max #8 Solid and Stranded

MEASUREMENTS

A - 0.49" B - 1.25"
A - 12.192mm B - 31.75mm



CONSTRUCTION

Lug: Brass
Set Screw: Brass
Heat Shrink: Polyolefin with adhesive liner

CURRENT RATING

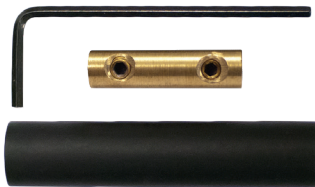
Conductor Size (AWG)	18	16	14	12	10	8
Maximum Current (AMP)	10	13	18	25	25	25

FEATURES AND BENEFITS

The ACE Connector is our brass screw-tight lug that creates a solid mechanical connection. This fast curing heat shrink makes it easy to get weather resistant wire connections. The ACE Connector is ideally suited for low voltage landscape lighting applications where performance and clean looks are important.

- Solid brass lug
- Fast curing heat shrink
- Weather resistant to withstand outdoor elements
- For use in low voltage landscape lighting and direct bury applications
- Set screw thread pitch allows tighter securing of wires

Ace Connector (Small)

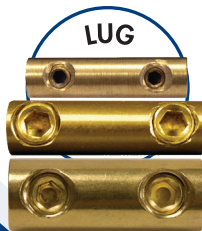


Ace Connector (Medium)



25% longer heat shrink tube that helps the entire connection resist water intrusion.

Ace Connector (Large)



All trademarks, U.S. and Foreign apply.
All Rights Reserved.